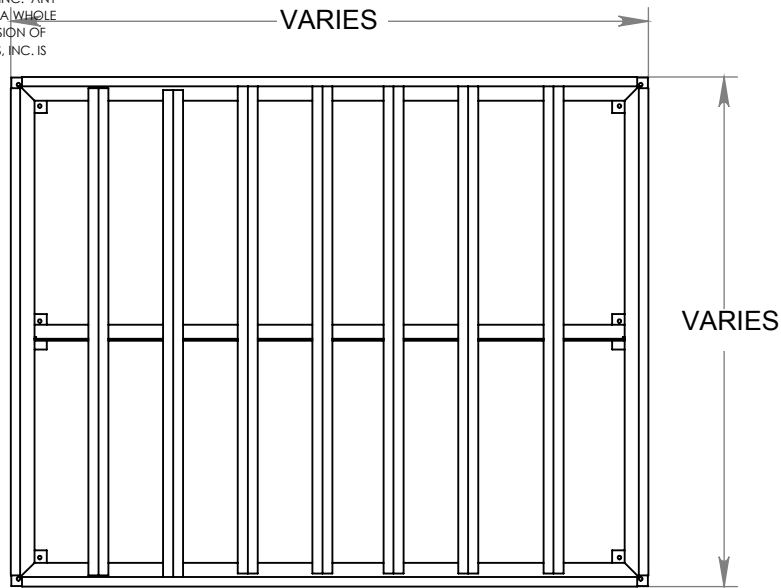
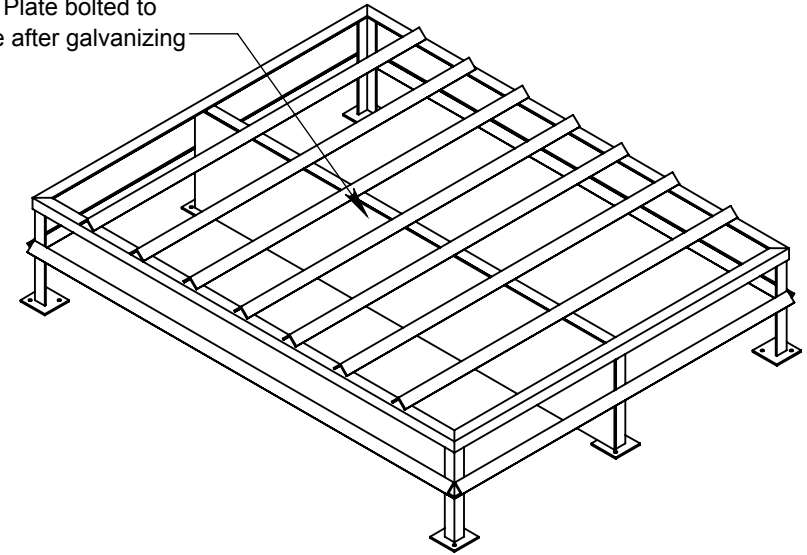


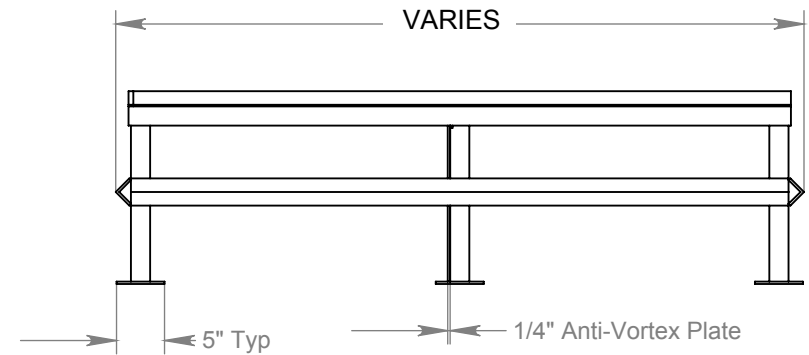
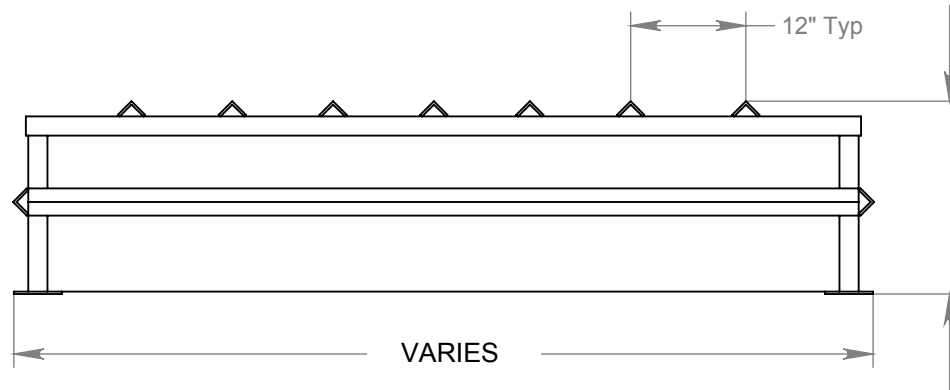
PROPRIETARY AND CONFIDENTIAL
THE INFORMATION CONTAINED IN THIS
DRAWING IS THE SOLE PROPERTY OF
ENVIRONMENTAL COMPOSITES, INC. ANY
REPRODUCTION IN PART OR AS A WHOLE
WITHOUT THE WRITTEN PERMISSION OF
ENVIRONMENTAL COMPOSITES, INC. IS
PROHIBITED.



Anti-Vortex Plate bolted to
angle frame after galvanizing



Part to be hot dipped
galvanized after fabrication



STRUCTURE TOP TRASH RACK SAMPLE DRAWING