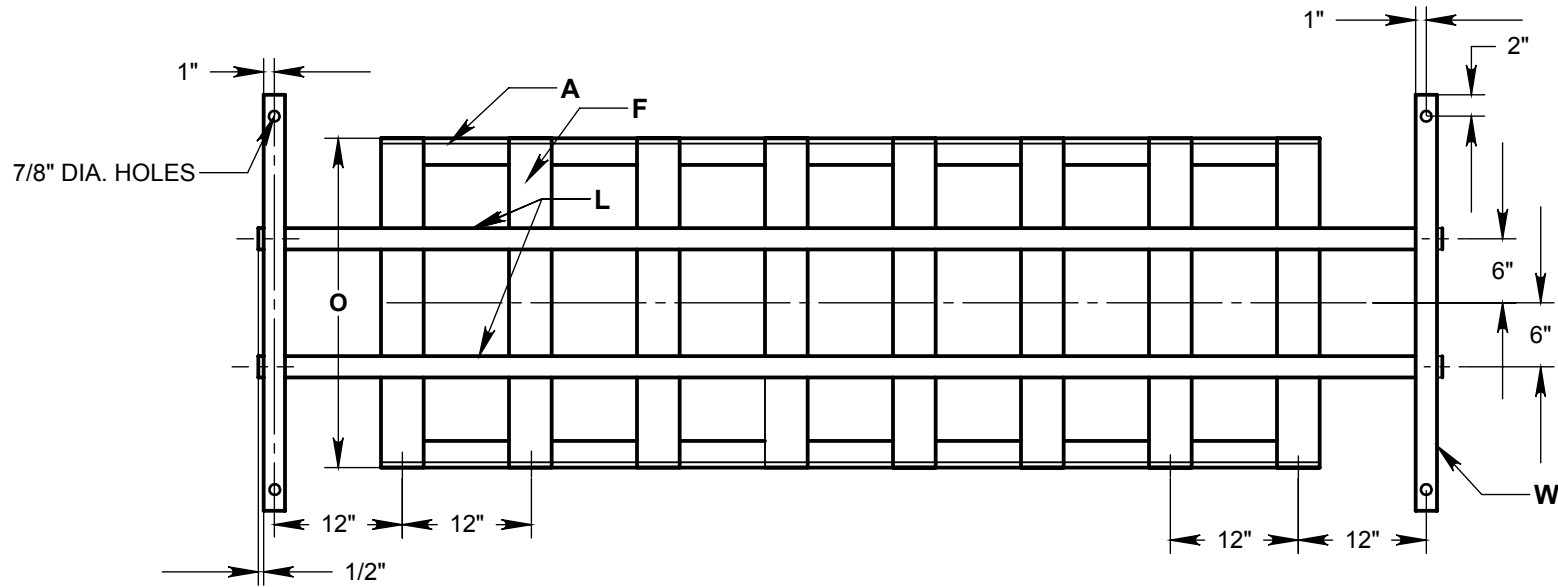


PROPRIETARY AND CONFIDENTIAL
 THE INFORMATION CONTAINED IN THIS
 DRAWING IS THE SOLE PROPERTY OF
 ENVIRONMENTAL COMPOSITES, INC. ANY
 REPRODUCTION IN PART OR AS A WHOLE
 WITHOUT THE WRITTEN PERMISSION OF
 ENVIRONMENTAL COMPOSITES, INC. IS
 PROHIBITED.

"U" GRATE - FL DOT INDEX 261

1:3 Slope



Pipe Size	L 2" x 1/2" Flat Bar Qty 2	W 2" x 1/2" Flat Bar Qty 2	F C4 X 5.4 Channel Qty	F C4 X 5.4 Channel Length	O Outside Dimension	A 2-1/2" x 2" x 1/4" Angle Qty 2	Total Weight (lbs.)
15"	4'-3"	39"	3	30-7/8"	32"	2'-4"	110
18"	5'-3"	42"	4	33-7/8"	35"	3'-4"	145
24"	6'-3"	48"	5	39-7/8"	41"	4'-4"	191
30"	8'-3"	54"	7	45-7/8"	47"	6'-4"	278

NOT TO SCALE

TOLERANCE: + / - 1/8"